

wehlers®

Our Collection

Sustainable Seatings





R.U.M.



Stool + Stepstool

R.U.M.

Designed by

CF MØLLER
ARCHITECTS

The Chair

The Wehlers R.U.M. chair is proof that by designing on the principles of circular design it is possible to lower emissions and reduce the use of virgin materials significantly - all without compromising on neither aesthetics, price nor quality – changing the furniture industry for good.

R.U.M. is short for ReUsedMaterials and is either made of fishing nets, pharmlit or e-waste. The circularity is supported by the use of only two materials that can be 100% recycled without significant material downgrading. A Chair designed to change the way furniture is made in the World.

Use

R.U.M. chair fits perfectly as a conference chair and as a dining chair, or in the study or

children's room in the household.

A sustainable design piece of furniture that is not only really good to sit on, but which also speaks directly into our shared ambition for a green future.

About the Designers

C.F. Møller Design is an integral part of C.F. Møller Architects, one of Scandinavia's leading architectural firms. C.F. Møller Design cooperates internationally on design and development of innovative and meaningful products for people, buildings and cities. Their vision is to improve life for people and planet.

C.F. Møller Design describes the creation of R.U.M. as being friendly, comfortable & practical, and meant for use in public areas, contract furniture & private house holds.



R.U.M. ReUsedMaterials

Recycled Plast

Seat and back is made of recycled plastic waste

Fisherman's Green ●

Keyboard Black ●

Pharma Blue ●

Recycled Upholstery from Kvadrat

Seat upholstered with ReWool from Kvadrat. We offer a wide range of colors.

Microchip

Scan the chair with your smartphone and follow the products lifecycle and environmental impact.

Recycled Steel

Base in recycled steel

● Black

● Orange

○ Special color



R.U.M. designs



R.U.M. original



R.U.M. armrest



R.U.M. sledge



R.U.M. wheels



R.U.M. wheels armrest



R.U.M. barstool



Fisherman's green
Fishing net



Keyboard black
E-waste



Pharma blue
Pharmalit

Keyboard black

E-waste



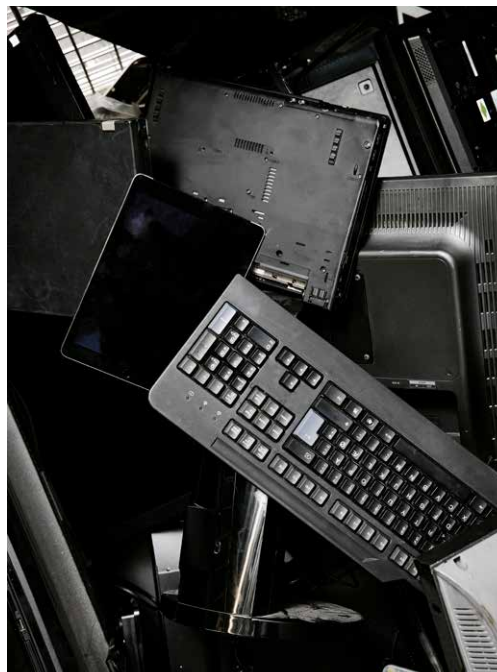
Keyboard Black, ReWool, barstool, black base



Keyboard Black, ReWool, original, special base colour



Keyboard Black, ReWool, barstool, black base



E-waste



Keyboard Black, ReWool, original, black base



Keyboard Black, original, base orange + special colour

E-waste products consist of reused plastic materials from discarded electronic devices. With technological appliances being produced and consumed in a large extent – the fastest growing waste stream in Europe - it is important to reuse the considerable amount of e-waste that, due to our consumption only naturally arises. All our e-waste material is from Austria.

Fisherman's green

Fishing net



Fisherman's green original, orange base



Fishing net



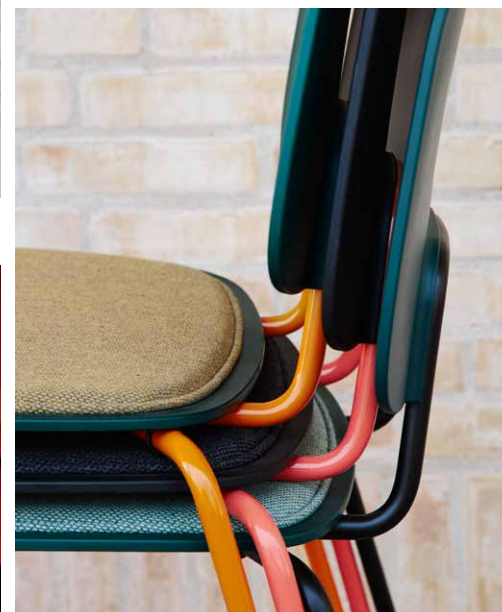
Fisherman's green wheels, orange base



Fisherman's green original, rewool, black base



Fisherman's green original, orange base



Fisherman's green original

Using discarded fishing net as material for products is both eco-friendly and contribute to cleaner oceans and a healthier planet. The majority of all fishing nets used in our products are collected from Danish or Faroese waters and sorted by hand in Denmark to ensure a correct usage of the material.



Pharma Blue

Pharmalit



Pharma Blue original, black base



Pharma Blue original, black base



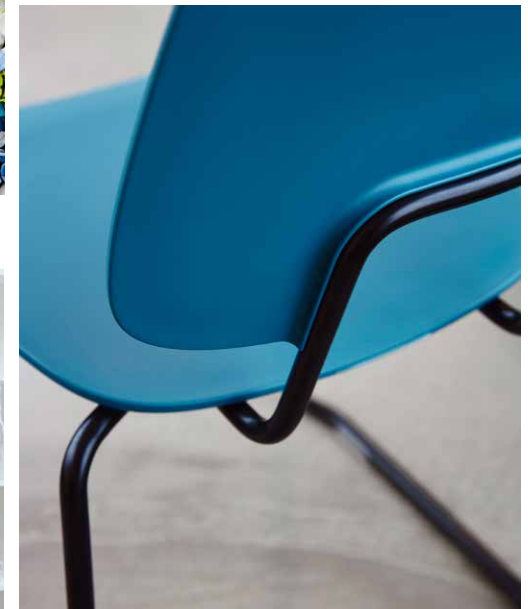
Pharmalit



Pharma Blue armrest, black base



Pharma Blue sledge, black base



Pharma Blue sledge, black base

Pharma blue products contain plastic material from used pharma resources, mainly insulin pens. By collecting this material and reusing it, we minimize waste and maximize the potential of these valuable health products. We use waste material from 142 insulin pens to produce one chair. All our pharma waste is collected in Denmark.



R.U.M. original



Fisherman's Green



Pharma Blue



Keyboard Black

Designer

C.F. Møller Design

Dimensions

Seat depth: 39,5 cm

Seat width: 43,5 cm

Seat height: 46 cm

Height: 80,25 cm

Sustainability

Base is recycled steel.

Seat and back is made of recycled waste. Seat upholstered with Re-Wool from Kvadrat.



Fisherman's Green ReWool



Pharma Blue ReWool



Keyboard Black ReWool

R.U.M. armrest



Fisherman's Green



Pharma Blue



Keyboard Black

Designer

C.F. Møller Design

Dimensions

Seat depth: 39,5 cm

Seat width: 43,5 cm

Seat height: 46 cm

Height: 80,25 cm

Sustainability

Base in recycled steel.

Seat and back is made of recycled waste. Seat upholstered with Re-Wool from Kvadrat.



Fisherman's Green ReWool



Pharma Blue ReWool



Keyboard Black ReWool

R.U.M. sledge



Fisherman's Green



Pharma Blue



Keyboard Black



Fisherman's Green ReWool



Pharma Blue ReWool



Keyboard Black ReWool

Designer

C.F. Møller Design

Dimensions

Seat depth: 39,5 cm

Seat width: 43,5 cm

Seat height: 46 cm

Height: 80,5 cm

Sustainability

Base is recycled steel.

Seat and back is made of

recycled waste. Seat upholstered

with Re-Wool from Kvadrat.

R.U.M. wheels



Fisherman's Green



Pharma Blue



Keyboard Black

Designer

C.F. Møller Design

Dimensions

Seat depth: 39,5 cm
Seat width: 43,5 cm
Seat height: 43-58 cm
Total height: 90,5 cm

Sustainability

Base is recycled steel.
Seat and back is made of
recycled waste. Seat upholstered
with Re-Wool from Kvadrat.



Fisherman's Green ReWool



Pharma Blue ReWool



Keyboard Black ReWool

R.U.M. wheels armrest



Fisherman's Green



Pharma Blue



Keyboard Black



Designer

C.F. Møller Design

Dimensions

Seat depth: 39,5 cm
Seat width: 43,5 cm
Seat height: 43-58 cm
Total height: 90,5 cm

Sustainability

Base is recycled steel.
Seat and back is made of recycled waste. Seat upholstered with Re-Wool from Kvadrat.



Fisherman's Green ReWool



Pharma Blue ReWool



Keyboard Black ReWool



R.U.M. barstool



Fisherman's Green



Pharma Blue



Keyboard Black



Fisherman's Green ReWool



Pharma Blue ReWool



Keyboard Black ReWool

Designer

C.F. Møller Design

Dimensions

Seat depth: 39,5 cm

Seat width: 43,5 cm

Seat height: 67 cm

Total height: 91,5 cm

Sustainability

Base is recycled steel.

Seat and back is made of recycled waste. Seat upholstered with Re-Wool from Kvadrat.

ReWool. by Kvadrat

Crafted using 45% recycled wool, Re-wool is a rich upholstery textile with a sustainable profile. The textile is partly made by reusing scraps from Kvadrat's yarn spinners in the UK.

It is designed by Margrethe Odgaard.

'The idea was to create a both honest and environmentally friendly – textile with a poetic feel by recycling leftover material from Kvadrat's own production', explains Margrethe Odgaard.

Reminiscent of colourful stitchings on a darker background, Re-wool features exceptional depth of colour, creating a dynamic play on the textile's surface when applied to furniture.

Find more information and explore all colors here at Kvadrats.

Composition

45% new wool worsted
45% recycled wool
10% nylon

Durability

100,000 Martindale

Pilling

4 (ISO 1-5)

Lightfastness

5-7 (ISO 1-8)

Warranty

10 years

Produced in

United Kingdom

Sustainability

EU Ecolabel, Greenguard Gold, HPD



Special color



Customize your R.U.M. chair

Elevate your space and make it uniquely yours with our R.U.M. chairs with personalized RAL chair legs. When you place an order for a minimum of 25 pieces, we offer you the opportunity to personalize your chairs. At a nominal additional fee, you can select the exact RAL color you desire for the R.U.M. chair legs.

This customization option allows you to harmonize your seating solutions with your overall design scheme. Whether you're looking to match your chairs to your corporate branding, complement

your interior décor, or simply express your unique taste.

Imagine the possibilities! Your chairs can become a canvas for creativity, making them not just functional but also a reflection of your personality and vision. With our extensive range of RAL colors, you'll find the perfect shade to make your chairs stand out.

Contact us today to discuss your customization options and take the first step toward creating the perfect chairs for your environment.



Stool + Stepstool

Designed by



StepStool

The StepStool is based on the classic milking stool, where the design is focused on functionality, saving only what's most important. The details and the craftsmanship is what we usually find in Danish furniture tradition. Signature characteristic of this stool are its joints: the legs are going through the seat and even though it is the same wood, you can clearly see the transition. This creates a significant detail.

Use

StepStool fits perfectly into the bedroom like a bedside table, or as a stool in the bathroom or in the kitchen. If you need a charismatic quality piece of furniture, StepStool is definitely a sustainable piece of furniture you should have in your reflections.

About the Designers

Carl & Carl is a Copenhagen/Berlin based, energetic design cooperation, which took its early and successful beginning at Royal Danish Academy of Fine Arts in 2003. In 2008 Thomas Albertsen and Gustaf Wollin opened a studio naming the duo after their grandfathers. A creative struggle between the designers results in fresh and aesthetic projects. Carl & Carl's multidisciplinary activities take inspiration in Dieter Rams "as little design as possible" and Danish design tradition.

Carl & Carl describes Stool as a successful, sustainable chair that can be included in Wehler's circular principles and which will continue to exist for many years to come.



Stool + Stepstool

FSC certified



Stool Oak soap



Stool Oak soap



Stool Oak soap

High-quality wood is used for all wooden products. We use FSC-certified suppliers to ensure sustainable forestry, which preserves biological diversity, replants new forests, and sustains economic viability while guaranteeing safe conditions for the people working there, thereby benefiting local communities.



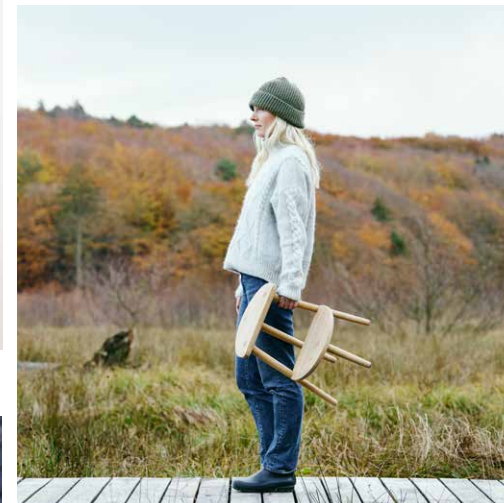
Stepstool Oak soap



Stepstool Oak soap



Stool Oak soap



Stool + Stepstool

FSC certified

Designer

Carl & Carl

Dimensions

Height 45 cm

Width (seat) 32 cm

Sustainability

Wood is from an FSC-certified supplier. Stool + StepStool is made of soap treated oak without use of screws.

The circular principles are supported by this chair's use of only one materials that are 100% recyclable.



Stool Oak soap
from FSC Certified wood supplier



Step Stool Oak soap
from FSC Certified wood supplier



wehlers[®]

wehlers.com | info@wehlers.com | Maria Fryd +45 53 35 67 19 | Henrik Holm +45 25 67 16 38